

Pneumatic Tubing Spiders

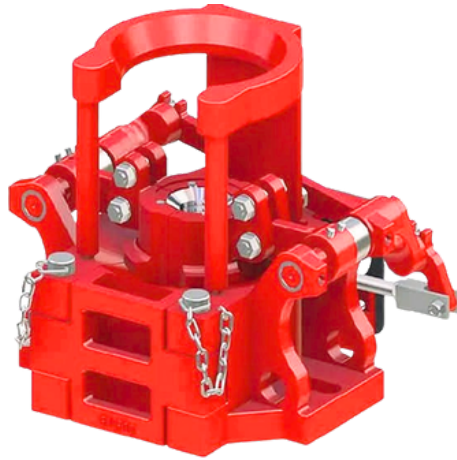
Arabian Drilling Tools specializes in manufacturing Spiders, confirming API-7K specifications.

Tubing Spiders offer the flexibility of being operated pneumatically or hydraulically, making them widely utilized in the tripping process. They can be conveniently operated using a foot remote control valve, facilitating the lifting and setting of Manual Slips.

Manufactured from high-grade alloy and heat-treated for prolonged product life and superior quality, our Spiders ensure durability and reliability. The Slip Inserts are meticulously designed to firmly grip tubular, complete with a 360° hold.

Available in three models based on different load ratings and gripping sizes: Model C, CHD, and E.

Optional Accessories: Adapter Plate.



Pneumatic Tubing Spiders
Figure No. 23

Various type of Tubing Spider:

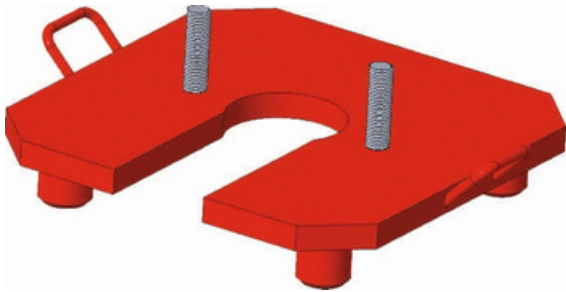
Model	Rated Capacity (up to)	Slip Body Size (In Inch)	OD of Tubular (In Inch)
ADT-PTS-C	100 Ton	3.1/2	1.315-3.1/2
		4.1/2	3.1/2-4.1/2
		4.3/4 (Integral)	4.3/4
		5 (Integral)	5
		5.1/2 (Integral)	5.1/2
ADT-PTS-CHD	125 Ton	3.1/2	1.315-3.1/2
		4.1/2	3.1/2-4.1/2
		4.3/4 (Integral)	4.3/4
		5 (Integral)	5
		5.1/2 (Integral)	5.1/2
ADT-PTS-E	200 Ton	3.1/2	2.3/8 to 3.1/2
		5.1/2	4 to 5.1/2
		7	5.1/2 to 7
		7.5/8 (Integral)	7.5/8
		8.5/8 (Integral)	8.5/8

Note: Hydraulic Spiders are also available on request.

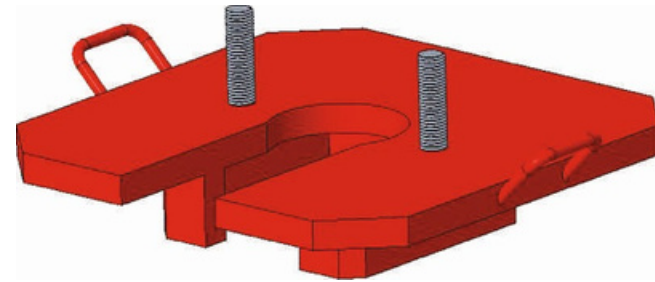
Part List of Inserts:

Slip Body Size (Inches)	Pipe Size (OD Inches)	Insert Set* Part No.
3.1/2	1.315	1101
	1.66	1102
	1.9	1103
	2.06	1104
	2.3/8	1105
	2.7/8	1106
4.1/2	3.5	1107
	3.5	1108
	4	1109
	4.5	1110
5.1/2	4	1111
	4.5	1112
	5	1113
	5.1/2	1114
7	5.1/2	1115
	6.5/8	1116
	7	1117

*Set Consists of 4 No. of Dies.

Adapter Plate for Pneumatic Spider (Optional)


For Pin Drive Master Bushing
Figure No. 24



For Square Drive Master Bushing
Figure No. 25

Master Bushing Size/Type	17.1/2"	20.1/2"	27.1/2"	37.1/2"
Square Drive	1755-PTS-SQ	2055-PTS-SQ	2755-PTS-SQ	-
Pin Drive	1755-PTS	2055-PTS	2755-PTS	3717-PTS